

prepared for: E & C ENTERPRISES LLC

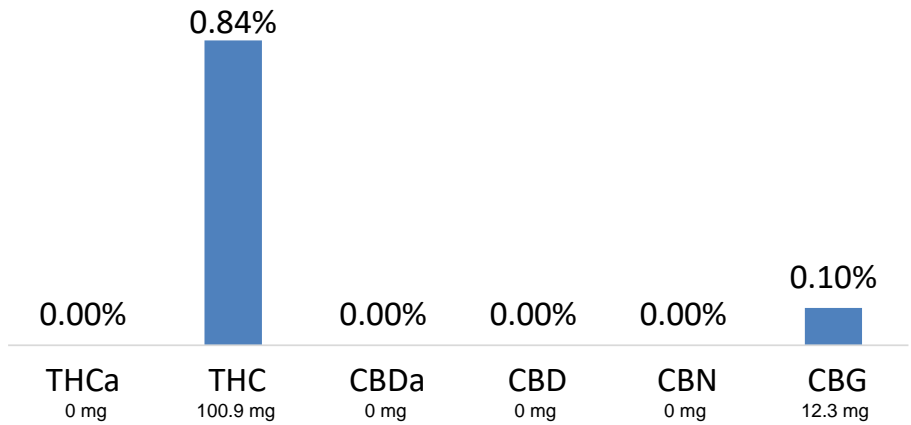
 404R-00147
 5595 ARAPAHOE AVENUE, SUITE F
 BOULDER, CO 80303

POG Tincture

METRC ID:	1A4000312687513000000017	Class:	Retail
Batch ID:	N/A	Type:	Edible
Manifest:	2972434	Test:	Potency & Homogeneity
Submitted:	01/28/2019 @ 13:13	Method:	TM01
Reported:	30-Jan-2019		

CANNABINOID PROFILE


- Total Potential THC 100.9mg **
- Total Potential CBD 0mg **



** Total Potential THC/CBD is calculated using the following formulas to take into account the loss of a carboxyl group during decarboxylation step.

Total THC = THC + (THCa * (0.877)) and Total CBD = CBD + (CBDa * (0.877))

% = % (w/w) = Percent (Weight of Analyte / Weight of Product)

NOTES:

Free from visual mold, mildew, and foreign matter.
 Package Claim = 90mg, # of Servings = 1, Sample Weight=12.07217g
 Homogeneity Sample 1 Normalized Value=10.12% (102.1mg), Homogeneity Sample 2 Normalized Value=9.94% (100.3mg)

FINAL APPROVAL

 Morgan Spedale 30-Jan-2019 1:02 PM	 David Green 30-Jan-2019 2:01 PM	PASS
PREPARED BY / DATE	APPROVED BY / DATE	FINAL STATUS

Testing results are based solely upon the sample submitted to Agricor Laboratories, LLC. Agricor Laboratories, LLC warrants that all analytical work is conducted professionally in accordance with all applicable standard laboratory practices using validated methods. Data was generated using an unbroken chain of comparison to NIST traceable Reference Standards and Certified Reference Materials. This report may not be reproduced, except in full, without the written approval of Agricor Laboratories, LLC. ISO/IEC 17025:2005 Accredited A2LA Certificate Number 4329.01



Certificate #4329.01