

prepared for: E & C ENTERPRISES LLC

404R-00147

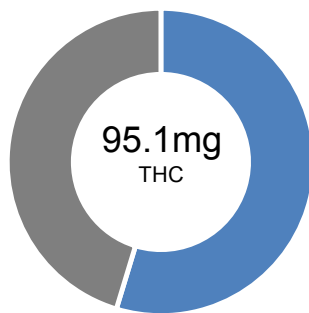
5595 ARAPAHOE AVENUE, SUITE F

BOULDER, CO 80303

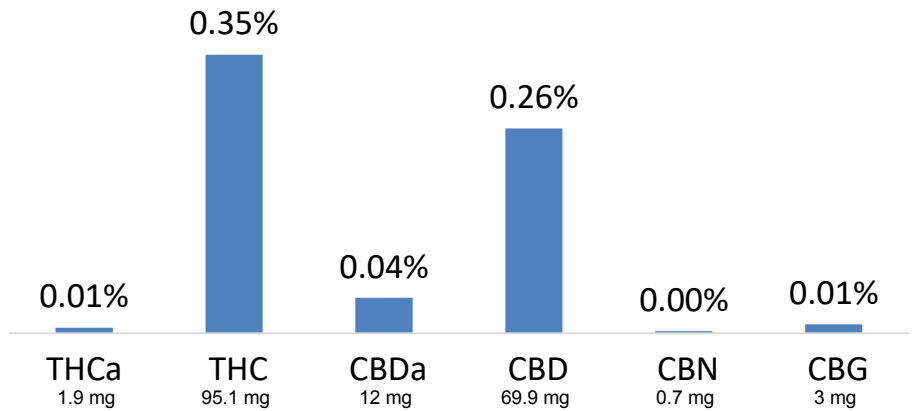
Remedy Tincture # 1

METRC ID:	1A4000312687513000000009	Class:	Retail
Batch ID:	N/A	Type:	Edible
Manifest:	2818321	Test:	Potency & Homogeneity
Submitted:	12/04/2018 @ 13:55	Method:	TM01
Reported:	6-Dec-2018		

CANNABINOID PROFILE



- Total Potential THC 96.7mg **
- Total Potential CBD 80.5mg **



** Total Potential THC/CBD is calculated using the following formulas to take into account the loss of a carboxyl group during decarboxylation step.

Total THC = THC + (THCa * (0.877)) and Total CBD = CBD + (CBDa * (0.877))

% = % (w/w) = Percent (Weight of Analyte / Weight of Product)

NOTES:

Free from visual mold, mildew, and foreign matter.

Package Claim = 100mg, # of Servings = 1, Sample Weight=27.33731g

Homogeneity Sample 1 Normalized Value=10.14% (96.4mg), Homogeneity Sample 2 Normalized Value=10.11% (96.1mg)

FINAL APPROVAL

Samantha Smith
 Sam Smith
 6-Dec-2018
 2:30 PM

PREPARED BY / DATE

Mike Branvold
 Mike Branvold
 6-Dec-2018
 3:04 PM

APPROVED BY / DATE

PASS

FINAL STATUS

Testing results are based solely upon the sample submitted to Agricor Laboratories, LLC. Agricor Laboratories, LLC warrants that all analytical work is conducted professionally in accordance with all applicable standard laboratory practices using validated methods. Data was generated using an unbroken chain of comparison to NIST traceable Reference Standards and Certified Reference Materials. This report may not be reproduced, except in full, without the written approval of Agricor Laboratories, LLC. ISO/IEC 17025:2005 Accredited A2LA Certificate Number 4329.01



Certificate #4329.01